

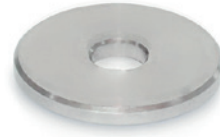
- 1
- 2
- 3
- 4
- 5
- 6
- 7
- 8
- 9
- 10
- 11
- 12
- 13
- 14
- 15
- 16
- 17
- 18

**MATERIAL**

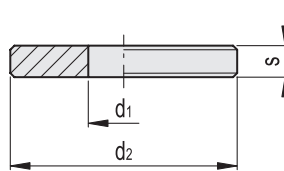
AISI 304 stainless steel.

**FEATURES AND APPLICATIONS**

Typical application of GN 6343 washers is the mounting at the end of the shaft to fit handwheels with an axial keyway.



Conversion Table	
1 mm = 0.039 inch	
d1	
mm	inch
4	0.16
5	0.20
6	0.24
8	0.31
10	0.39
12	0.47
16	0.63



Code	Description	d1 +0.1 +0.3	d2 -0.2	s ±0.1	⚖
GN.70401	GN 6343-NI-4-8-1	4	8	1	3
GN.70402	GN 6343-NI-4-8-2	4	8	2	6
GN.70405	GN 6343-NI-4-12-1	4	12	1	8
GN.70406	GN 6343-NI-4-12-2	4	12	2	16
GN.70407	GN 6343-NI-4-12-3	4	12	3	24
GN.70421	GN 6343-NI-5-10-1	5	10	1	5
GN.70422	GN 6343-NI-5-10-2	5	10	2	10
GN.70423	GN 6343-NI-5-10-3	5	10	3	14
GN.70426	GN 6343-NI-5-15-2	5	15	2	25
GN.70427	GN 6343-NI-5-15-3	5	15	3	37
GN.70441	GN 6343-NI-6-12-1	6	12	1	7
GN.70442	GN 6343-NI-6-12-2	6	12	2	14
GN.70443	GN 6343-NI-6-12-3	6	12	3	20
GN.70446	GN 6343-NI-6-20-2	6	20	2	45
GN.70447	GN 6343-NI-6-20-3	6	20	3	68
GN.70448	GN 6343-NI-6-20-5	6	20	5	110
GN.70462	GN 6343-NI-8-16-2	8	16	2	24
GN.70463	GN 6343-NI-8-16-3	8	16	3	36
GN.70464	GN 6343-NI-8-16-5	8	16	5	60
GN.70466	GN 6343-NI-8-25-2	8	25	2	70
GN.70467	GN 6343-NI-8-25-3	8	25	3	100
GN.70468	GN 6343-NI-8-25-5	8	25	5	170
GN.70482	GN 6343-NI-10-20-2	10	20	2	37
GN.70483	GN 6343-NI-10-20-3	10	20	3	56
GN.70484	GN 6343-NI-10-20-5	10	20	5	93
GN.70487	GN 6343-NI-10-30-3	10	30	3	120
GN.70488	GN 6343-NI-10-30-5	10	30	5	200
GN.70502	GN 6343-NI-12-20-2	12	20	2	32
GN.70503	GN 6343-NI-12-20-3	12	20	3	48
GN.70504	GN 6343-NI-12-20-5	12	20	5	80
GN.70507	GN 6343-NI-12-30-3	12	30	3	140
GN.70508	GN 6343-NI-12-30-5	12	30	5	230
GN.70522	GN 6343-NI-16-20-2	16	20	2	18
GN.70523	GN 6343-NI-16-20-3	16	20	3	27
GN.70524	GN 6343-NI-16-20-5	16	20	5	45
GN.70527	GN 6343-NI-16-30-3	16	30	3	150
GN.70528	GN 6343-NI-16-30-5	16	30	5	250

Machine elements